

Entry to the paddock from August 24 at 10:00 a.m., prior accreditation at La Massana (accreditation centre)

Team or company details:

Company name (for billing) :	E-mail:
Business name (brand/team):	Address:
CIF :	City:
Contact person (for assembly):	Country and postal code:
Mobile phone:	Arrival: Between August 24th and 26th
Type of team (XC, DH, XC elite, DH elite, dual, etc.):	Departure: Maximum on 09/2/2024 at 10 a.m.

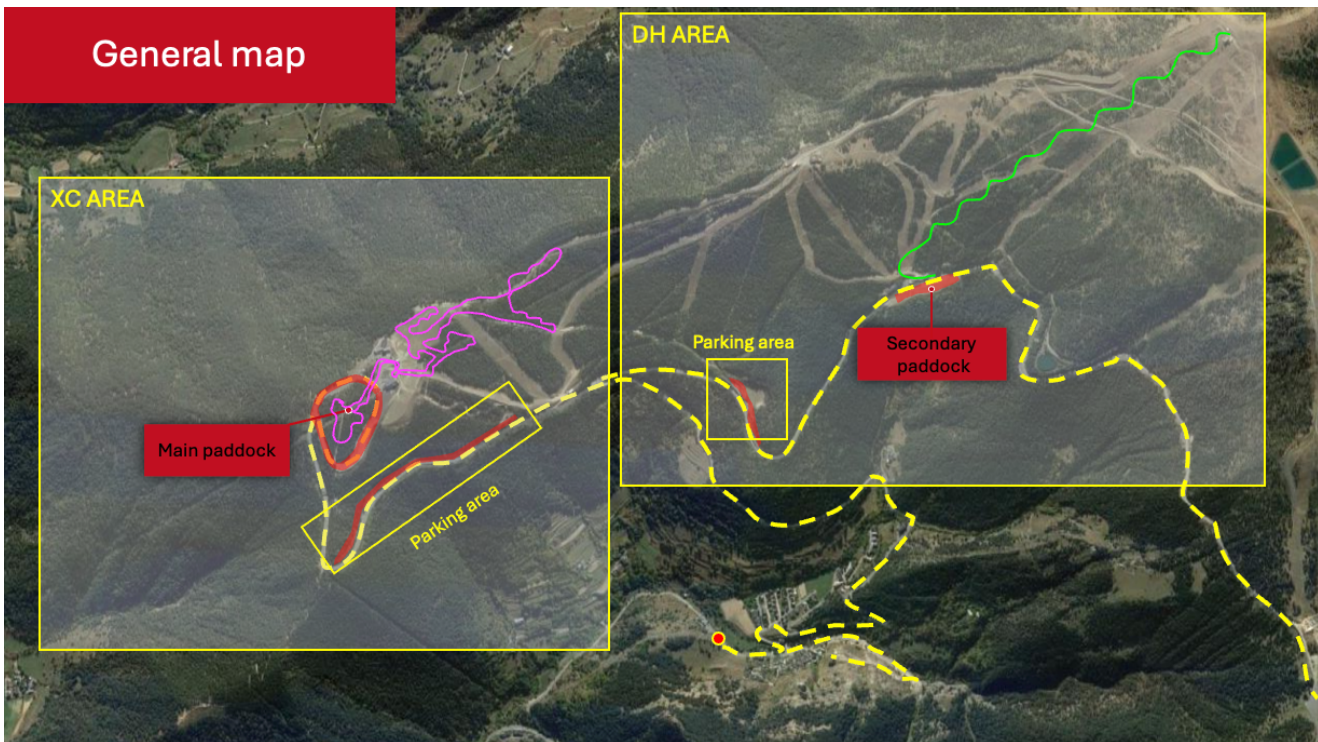
Venues details:

For logistical reasons, **all national teams will be located in the Caubella paddock**, the main event area, with direct access to the La Massana gondola and connected by shuttles between the DH and XC venues. The road will be closed during all competition days (yellow line on the map), only accredited vehicles will be able to travel there.

The secondary paddock is intended for all elite DH and IMTTO DH teams.

Teams participating in DH events will be able to travel with their authorized vehicle to the Fontanals area to unload their equipment, then park in the areas reserved for teams. The national DH teams will have a technical space of 100 m² to share between all the teams (same operation as in 2023) protected by a tent with platform at the foot of the Cubil chairlift.

To facilitate access to the paddock and maximize safety, team vehicles cannot park in the paddock area, but park in the parking area indicated below. Teams can only have one fixed vehicle and one mobile vehicle authorized in their reserved location. The rest of the vehicles will not be able to access the paddock areas and will have to park in the team areas.



Paddock Rules:

This year, team vehicles cannot be included in the paddock area, this can only include a fixed structure and a single vehicle that can be moved within the stipulated time frame, the rest of the team vehicles must be parked in the indicated area (between the Caubella bridges and Pal shooting range). Any team not respecting these regulations will be penalized by the traffic department.

It is absolutely forbidden to clean the bikes, empty the contents of the wheels or dump any substance inside the paddock; teams must clean them and empty their waste in authorized spaces.

The Andorran Highway Code states that: users who travel on public roads with motorized personal mobility vehicles must respect the following obligations:

- They must wear reflective clothing or accessories on interurban roads and when weather or light conditions require it.
- They must wear an approved and properly attached protective helmet during long-distance journeys.
- They cannot transport another person
- They cannot have headphones turned on and connected or any other sound emitting device
- They cannot drag loads
- They cannot be towed by any other vehicle

During the competition days, the Bike Park will remain closed, so it is completely prohibited to circulate with bicycles and electric bikes on the competition circuits. Only competition and warm-up bikes will be allowed. This also applies to the cable car, only riders' bikes will be allowed (with a number), the rest of the bikes will not be accepted. It is recommended to travel with authorized team vehicles and shuttles.

Space rental rates (Please indicate the modality you want as well as the space you want)

	Non-national teams & IMTTO / Tech Alley Members	Exhibitors
Vehicle accreditation	1 fixed vehicle/module 1 vehicle with access to the paddock 1 vehicle with parking access	1 fixed vehicle/module 1 vehicle with access to the paddock 1 vehicle with parking access
Up to 30 m ²	5€ / m ²	25€ / m ²
From 31 to 80 m ²	10€ / m ²	25€ / m ²
From 81 to 100 m ¹	15€ / m ²	22€ / m ²
101 m ² and more	15€ / m ²	22€ / m ²
Electricity (220V) *	130€	130€
Electricity (380V) *	250€	250€

* Please bring your own cables to connect to the power grid

Indicate how many additional lift passes you would like to purchase:

1 day pass (30€*)		3 days pass (70€*)		7 days pass (100€*)	
-------------------	--	--------------------	--	---------------------	--

Indicate how many additional vehicle accreditations you would like to purchase:

Additional accreditation for vehicles, includes access to the site and team parking, does not give access to the paddock (70€/u)	
--	--

Indicate your activities here to be included in the official program (signatures, draws, etc.):

.....
.....

<input type="checkbox"/>	I agree not to do any commercial activation during the 2024 UCI Mountain Bike World Championships Pal Arinsal
--------------------------	---

Water	There will be a special area for cleaning bicycles. It is also prohibited to clean bicycles in the paddock area and exhibition area.
Security	Night security from August 24 to September 2.

Stand size

The allocated space will be rectangular or square. **Only one vehicle per team has the right to access the paddock/s, the rest of the team vehicles must be parked in authorized areas.**

Please provide us with a basic plan of the stand including the fixed module and the tents.

Length in m =	Width in m =	Total area in m ² =
---------------	--------------	--------------------------------

Stand rate

Total m ² rated (x€/m ²)	=	Price in €
Additional accreditations requested (ski pass and car pass)	+	Price in €
+ electricity (220V) = 130€ / (380V) = 250€	+	Price in €
Forms received after July 15 th incur a surcharge of 250€	+	Price in €
Deposit of €250 for non-compliance with regulations	+	250,00 €
TOTAL (All invoices will be issued in euros)	=	Price in €

CIF/VAT NUMBER _____ (For invoices without taxes)

All invoices will be issued in euros. If it is an Austrian or non-CIF/VAT company, you will be obliged to pay the applicable taxes.

PAYMENT DATA		CANCELLATION FEES	
		% Non refundable	
100 %	When booking	50%	Before July 15 th
		100%	After July 15 th

A supplement of €250 will be applied (UCI ELITE equipment included) to any form received after July 15, as well as in the event of non-use of the entire reserved space or departure before the fixed day and time.

No reservations will be accepted after August 5, 2024.

All teams must pay a deposit of €250 which will be returned at the end of the world championships in order to guarantee proper compliance with mobility and paddock regulations.

Payment

Once we receive your request, we will process it internally and you will receive a confirmation email with a payment link to complete it.

Invoices will be issued fortnightly and emailed to you by our accounting team.

I have read and accept the general conditions

Signature and seal:

Date:

Assembly days and payment rules

Assembly days	From August 24 th to 26 th , 2024
Dismantling days	From Sunday September 1st at 7 p.m. All teams must have vacated their space no later than September 2 at 3 p.m.
A supplement of €250 will be applied in each of these cases:	<ul style="list-style-type: none"> • Registration from July 15, 2024 • Partial use or non-use of the reserved space <p>Departure before the date indicated on the form, September 1 from 7 p.m. (DH teams will be able to leave from 08/31 at 7 p.m.)</p> <p>€250 will be blocked on your bank card when you register as a precautionary measure</p> <p>No reservations will be accepted after August 5, 2024</p>

Please send the completed form to: paddockwc@palarinsal.com

If in doubt, please contact Anna Rodriguez / paddockwc@palarinsal.com / 00376 878 018

Confirmation from the organizer:

Signature:

Date:

Payment received