

Paddock entry: July 7–8, subject to accreditation at the Race Office (La Massana).

- ☐ TEAM AREA: Wildcard teams, national federations and private teams
☐ PADDOCK PARTNER

Team or Company Details

Company name (for billing):	Email:
Company name (brand/team):	Address:
CIF/VAT number:	City:
Contact person (for assembly):	Country and postal code:
Mobile phone:	Arrival: Between July 7–8
Type of team (wildcards, national federations and private teams):	Departure: No later than July 14 at 10:00 a.m.

Space rental rates:

	Wildcards and UCI teams	National Federations	Privateers	Paddock partner
Accreditations	8	5	5	5
Branded paddock vehicles	2	1	1	1
Drop-off vehicles	1	1	1	1
Free of charge	X	Max 30m ²	X	X
Cost/m²	30€/m ²	30€/m ²	30€/m ²	30€/m ²
Max Area	100 m ²	50 m ²	50 m ²	200m ²
Expo Space	No	No	No	No
Electricity (220V)*	200 €	200 €	200 €	200 €

* You may bring your own electrical cables.

Water	Water is available in a dedicated area for cleaning bikes. Bike cleaning is prohibited in the paddock or expo area.
Security	Night security will be provided from July 9 to 13.

Extra Spectator Passes (Includes lift access):

No. of days	Price	Quantity	Total	
1 day	15€			
3 days	40€			
5 days	60€			

Stand Information:

Please provide us with a basic plan of the stand including tents. Cars are not allowed to move once parked within the reserved area.		
Length in m. =	Width in m. =	Total surface area in m ² =

Cost Summary:

Total free of charge surface area in m ²	No cost (only national teams)	
Total surface area (m ²)	× Rate (€30/m ²)	= Price in €
	Extra passes	+ Price in €
	+ electricity (220V) = 200€	+ Price in €
	Late submission fee (after June 9) = €250	+ Price in €
	TOTAL (All invoices will be issued in euros)	= Price in €

NUMBER CIF/VAT _____ (Pointing to invoice without fees)

All invoices are issued in euros. If you are an Austrian company or one that does not have a CIF/VAT, you will be required to pay the applicable taxes.

Payment & Cancellation Policy

PAYMENT DETAILS		CANCELLATION COSTS	
		% Non-refundable	
100 %	At the time of booking	50%	Before June 16 th
		100%	After June 16 th
<ul style="list-style-type: none">• A €250 late fee applies for:<ul style="list-style-type: none">○ Submissions after June 16th○ Not using all reserved space○ Early departure• No reservations accepted after <u>June 16, 2025</u>• A €250 credit card hold will be applied upon accreditation at the race office			

Payment

Once your request is received, you will receive a confirmation email with a payment link.
Invoices are issued every Friday by our accounting team.

☐ I agree to the general terms and conditions

Signature & Company Seal:

Date:

Assembly & Dismantling

Assembly	July 7–8 (before 6:00 p.m.)
Dismantling	DH area: July 12 from 7:00 p.m. XC area: July 13 from 7:00 p.m.
Observations	<ul style="list-style-type: none"> • A €250 late fee applies for: <ul style="list-style-type: none"> ◦ Submissions after June 9 ◦ Not using all reserved space ◦ Early departure • No reservations accepted after June 16, 2025 • A €250 credit card hold will be applied upon accreditation at the race office

Send the completed form to: paddockwc@palarinsal.com

For questions, contact Maria Zorzano at the same email or call +376 878 018

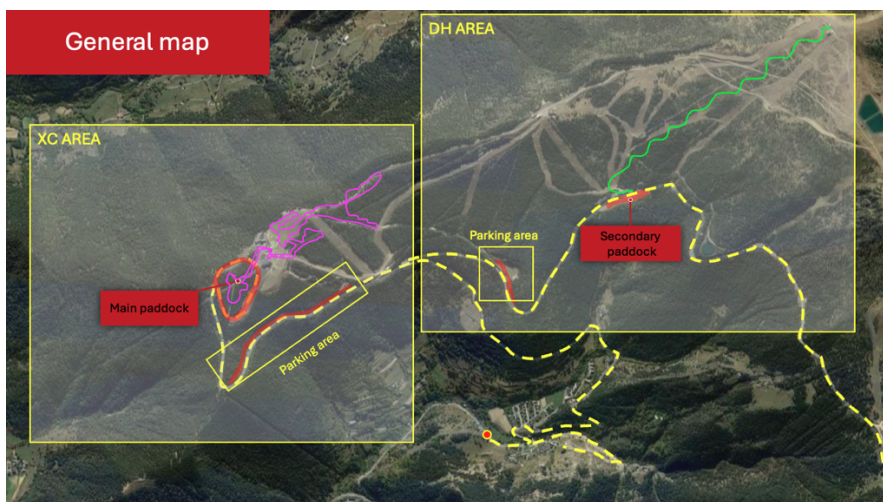
Organizer Confirmation:

Signature:

Date:

☐ Payment received

Paddock operation:



Distribution of teams:

- Only **Elite DH Teams and DH Paddock Partners** will be located in **Fontanals (DH area)**
- All others will be in **Caubella (XC area)**
- DH Teams can temporarily access Fontanals with authorized vehicles to unload
- Teams share a 100 m² technical area near the chairlift (same setup as 2024)

It is absolutely forbidden to clean bicycles, empty the contents of the wheels or pour any substance into the paddock ground; bikes must be cleaned, and their waste must be emptied in the authorized spaces.

Teams are required to respect the Andorran traffic code, which establishes that: users who travel on public roads with motorized personal mobility vehicles must respect the following obligations:

- They must wear reflective clothing or accessories on interurban roads, and when weather or light conditions require it.
- They must wear an approved protective helmet and properly attached during long-distance journeys.
- They cannot transport another person if the vehicle is not approved
- They cannot have headphones turned on and connected or any other sound-emitting device
- They cannot drag loads
- They cannot be towed by any other vehicle

Bike Use Restrictions:

- During competition days, **no riding in the competition area** unless with **accreditation**
- Applies to both **bikes** and **e-bikes**